

Media Announcement
24 September 2014

LAPADA ART & ANTIQUES FAIR OPENS TO GREAT ACCLAIM AND STAGGERING FOOTFALL

The 2014 LAPADA Art & Antiques Fair opened to great acclaim last night with a glittering preview event hosted by LAPADA President Earl Howe and Chairman Lord Chadlington. A staggering number of VIP collectors attended, with queues eventually filling Mayfair's Berkeley Square and a total footfall for preview day reaching a record-breaking 5288. Guests enjoyed Champagne Lanson and a sneak peek at the amazing selection of objects on display including painting, sculpture, jewellery, ceramics, furniture and vintage posters, from over 100 LAPADA dealers. Early reports suggest impressive sales across the board.



LAPADA STAND AND OBJECT AWARDS 2014 WINNERS ANNOUNCED

LAPADA is delighted to announce the winners of the Stand and Object Awards on this, the opening day of the 2014 LAPADA Art & Antiques Fair. A panel of esteemed judges, made up of interior designers, editors, collectors, and scholars, was invited to select a winning stand from over 100 dealers' exhibits at the fair, as well as five winning objects within each of the categories: Silver, Furniture, Jewellery, Objet d'art and Work of art.

The 2014 winners within their categories are:

- Stand Award: Michael Lipitch Ltd
- Furniture Category: Late Elizabethan Oak Tester Bed, English, Exeter 1580-1600 [Beedham Antiques]
- Silver Category: James II Drinking Mug, London 1685 [Mary Cooke Antiques]
- Objet d'Art Category: Embroidered Gentleman's Cap, English circa 1600 [Witney Antiques]
- Work of Art Category: Roger Fry, Provençal Valley Screen, 1913 [Jenna Burlingham Fine Art]
- Jewellery Category: Regency Peacock Locket circa 1800 [Sue Brown]



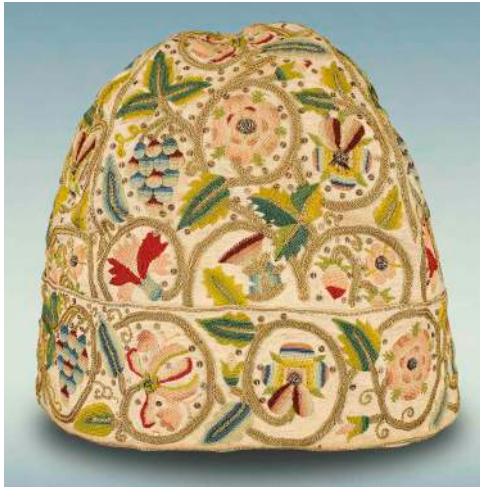
Rebecca Davies, LAPADA's Chief Executive, comments:

"This was a near impossible task. The 2014 LAPADA Fair hosts an incredible array of fascinating objects, each with their own unique story. The effort that goes into the planning and display of these objects by each LAPADA dealer is truly commendable. This year however, Michael Lipitch's careful symmetrical placing of exquisite 18th century furniture and Chinese glass paintings against a striking black backdrop made this sleek design stand out to the panel."

The sixth annual LAPADA Art & Antiques Fair is a must-visit event for sourcing and buying fine art and antiques from over 100 dealers and experts. Among the exceptional works on offer will be furniture, jewellery, carpets, tapestries, antiquities, clocks, ceramics, silver and fine art. Last year more than 19,000 visitors from around the world attended the Fair over the course of five days. Private collectors and art and antiques enthusiasts flocked to the Fair, where an expert committee of 50 specialists pre-vetted every piece on sale at the show to ensure quality and authenticity.

LAPADA

ART & ANTIQUES FAIR
BERKELEY SQUARE
24-28 SEPTEMBER 2014



A Gentleman's Cap. English, Worked. Circa 1600. from Witney Antiques



Elizabethan Tester Bed Godolphin House from Beedham Antiques



Roger Fry, Provencal Valley Screen, 1913, inscribed with Omega symbol, oil and gouache on paper on four panel screen from Jenna Burlington

Ends.

Notes to Editors:

Event: LAPADA Art & Antiques Fair 2014
Dates: Wednesday 24th September – Sunday 28th September 2014
Location: Berkeley Square, Mayfair, W1J 6EB
Website: www.lapadalondon.com
Telephone: +44 (0)20 7823 3511
Opening Hours: Collectors' Preview: Tuesday 23rd September 2014: 11am – 9pm*
Wednesday 24th September 2014: 11am – 5.30pm
Thursday 25th September 2014: 11am – 9pm
Friday 26th September 2014: 11am – 7pm
Saturday 27th September 2014: 11am – 7pm
Sunday 28th September 2014: 11am – 5pm
Admission: Entrance by ticket priced at £15 each or by invitation
*£65 each for Collectors' Preview invitation
Underground: Green Park - Jubilee, Victoria & Piccadilly lines
Bond Street - Central & Jubilee lines.
Major bus routes: via Piccadilly, Regent Street and Oxford Street

LAPADA the Association of Art and Antiques Dealers



LAPADA

THE ASSOCIATION OF
ART & ANTIQUES DEALERS

LAPADA the Association of Art & Antiques Dealers is the largest society of professional art and antiques dealers in the UK. It is a trusted resource for private collectors and the art & antiques trade in the UK and 16 other countries around the world. Established in 1974, and celebrating its 40th anniversary in 2014, it boasts 600 worldwide members, who are experts in their fields, with specialities ranging from fine art, jewellery and furniture to contemporary works, sculpture and ceramics. Due to the Association's strict Code of Practice, clients are offered total reassurance when purchasing from a LAPADA member. LAPADA offers a referral service for any member of the public looking for a trusted dealer in a specific area, who is seeking quality and assurance of authenticity. It also offers industry advice and lobbies on issues affecting its members and good practice in the art and antiques trade.

www.lapada.org

murray
weir willats

For more information please contact Zoe Ramsay or Amelia Christmas at Murray Weir Willats at lapada@murrayweirwillats.com tel: +44 (0)20 7245 1066

Principal Sponsor

DELANCEY[®]

Delancey is a specialist real estate investment, development and advisory company whose activities encompass retail, residential and commercial real estate across London and the UK. Collaborating on a wide range of assets, partners and clients, Delancey is recognised for its innovative and diverse approach to creating long term value from real estate. Delancey also advises clients on appropriate capital structures, financing and provides asset management and development services. Most recently, and reflecting its philosophy, Delancey has transformed the London 2012 Olympic Athletes Village, now known as "East Village", into a brand new neighbourhood for London, which has been awarded the accolade of 'Best New Place to Live' and the Mayor's Award for 'Planning Excellence'. www.delancey.com