

ANTIQUUE

COLLECTING

SEPTEMBER 2014

THE OAK AND COUNTRY EDITION

IN THIS ISSUE:

COUNTRY FURNITURE IS BACK!
WE CELEBRATE OAK'S RETURN

COLLECTING GUIDES:

DISCOVERING FAIRGROUND ART
LUXURY TIMEPIECES TO WATCH
STARTING WITH BESWICK WARE
THE NEW TREND IN TAXIDERMRY



PLUS:

LATEST NEWS • THREE CENTURIES OF SAMPLERS • PRE-PUBLICATION OFFERS
INDUSTRY PROFILES • AUCTION REPORTS

FAIRS NEWS

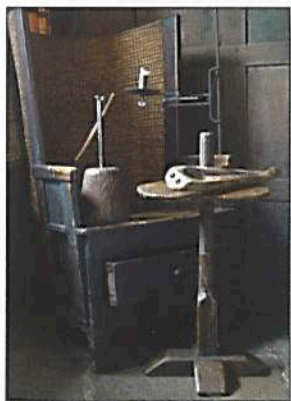


Chinese turn

The sixth annual LAPADA Fair Art and Antiques Fair returns to Berkeley Square in Mayfair with more than 100 fine art and antiques experts taking part in the prestigious event from September 24-28. Taking centre stage is the Cesare Maccari Collection of Chinese Watercolours which will be on sale for the first time from Crispian Riley-Smith Fine Arts Ltd. Cesare Maccari (1840-1919) was an Italian painter and sculptor and lover of eastern culture, whose art collection included 44 exquisite watercolours by local artists on handmade Chinese paper. Last year more than 19,000 visitors from around the world attended the five-day event which sees a committee of 50 specialists pre-vet every piece on sale to ensure quality and authenticity.

Manor born

Cothay Manor on the Somerset Devon border is the stunning backdrop to the three-day 10th Fine Art, Decorative and Antiques Fair next month. Yorkshire oak, country and lighting specialists, Country Oak Antiques, will be one of the retailers at the event running from October 24-26. Items for sale include a wooden 19th century spoon mould (half of which is pictured below) reputed to be from the



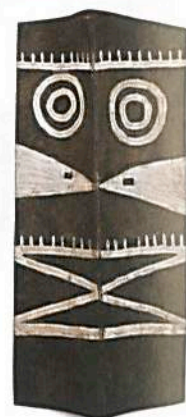
Orkney Isles, on offer at £225, as well as an unusual 18th century fruitwood and burr elm adjustable candle stand on sale for £2,500, both from Country Oak Antiques. Cothay Manor, which dates back to the 14th century, is said to be the finest example of a small medieval manor in England. Admission is £5.50, which includes admission to the gardens. All stands are vetted for authenticity and quality.

Comic book

Original works of art by leading illustrators of the 20th and 21st centuries will be a major attraction at the Petersfield Antiques Fair this month. Among the exhibits on sale at fair from September 5-7 will be works by Arthur Rackham (*Peter Pan* and *Alice in Wonderland*), Mary Tourtel (*Rupert Bear*) and Charles Fockard (*Arabian Nights*, *Grimm's Fairy Tales*, *Aesop's Fables* and *Pinocchio*). Other artists include Arthur Rackham, Edmund Dulac, E.H. Shepard and W. Heath Robinson as well as contemporary illustrators Quentin Blake, Ronald Searle, Christian Birmingham, Paul Kidby and Peter Malon. The Petersfield Antiques Fair, which launched in 1973, features a vast range of fine art and antiques from 40 specialist dealers. For more details visit www.penman-fairs.co.uk.

Ethnic majority

London's newest fair, Tribal Art London, which brings together some of the world's leading experts in the field, takes place this month. Running from September 10-13 at The Mall Galleries, it is the UK's only specialist top-flight tribal art event and double the size of its previous incarnation the Tribal Gathering. As well as tribal art, ceremonial objects, adornment and, for the first time ethnographic photography, the event will incorporate a series of talks on topics ranging from Bolon mask-makers from Burkina Faso to Naga tribal jewellery. Organiser Bryan Reeves said: "The exhibited works are all original period items made for intentional use, many of them museum-quality. There is a great deal of later work on the market today, made not for use in the tribe but to serve the consumer demands of a tourist trade." For more details visit www.tribalartlondon.com.



A 19th century Konyak Naga shield, from North East India from Kapil Jariwala.

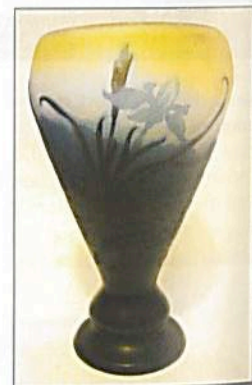
Date change

The Antiques and Fine Art Fair's third annual event in the sumptuous grounds of the Grade I listed Harewood House takes place on September 12-14. Director Ingrid Nilson said: "We have moved the timing of this event to coincide with Harewood House, one of the treasure houses of England, being open to the public." A wide variety of art, antiques, furniture and collectables will be on sale from 30 dealers. Penny Corah and Rosie Savory will present a French platinum, cabouchon, ruby and diamond ring, c.1910 and a superb Victorian butterfly brooch with emeralds, rubies, sapphires and diamonds, with a price tag of £4,600. Tickets to this year's fair cost £5 and can be used to access the grounds, designed by 'Capability' Brown. For more details visit www.harewoodfair.com.

London pride

This Emile Gallé cameo aquatic vase depicting water irises, c.1900, is one of the delights on offer at this month's Chelsea Antiques Fair.

The vase, from M&D Moir – one of more than 40 specialist dealers at the event at Chelsea Old Town Hall – is offered at £6,250, although prices of items on sale range across the board. After two very successful Spring fairs, the fair is returning to its familiar



September date, this year running from 18-21. Fair Organiser Caroline Penman, said: "Visitors love the distinctive charm of the Chelsea Old Town Hall and we continue to add our approachable style to make this such a welcoming antiques fair, which caters for the connoisseur as well as collectors of all ages." The Spring Chelsea Antiques Fair will take place from March 18-22 next year.

FAIRS CALENDAR

Because this list is compiled in advance, alterations or cancellations to the fairs listed can occur and it is not possible to notify readers of the changes. We strongly advise anyone wishing to attend a fair, especially if they have to travel any distance, to telephone the organiser to confirm the details given.

LONDON: inc. Greater London.

Adams Antiques Fairs

020 7254 4054
www.adamsantiquesfairs.com
Adams Antiques Fair,
Horticultural Hall, Lindley Hall,
Elverton Street (Off Vincent
Sq.), Victoria, SW1 2QD, **Sep 21**.
Frock Me! Vintage Fashion Fair,
Chelsea Town Hall, King's Rd.,
SW3 5EE, **Sep 14**.

Gay Hutson

020 8742 1611
www.britishartfair.co.uk
20/21 British Art Fair, Royal
College of Art, Kensington Gore,
SW7 2EU, **Sep 10-14**.

Harvey (Management Services) Ltd

020 7616 9327
www.decorativefair.com
The Decorative Antiques &
Textiles Fair, Battersea Evolution,
Battersea Park, SW11 4NJ, **Sep 30 - Oct 6**.

IACF

01636 702326

www.iacf.co.uk
Alexandra Palace, Alexandra
Palace Way, London N22 7AY,
Sep 14.

LAPADA

020 7823 3511
www.lapadalondon.com
LAPADA Art & Antiques Fair,
Berkley Square, **24-28 Sep**.

Penman Antique Fairs

01825 744074
www.penman-fairs.co.uk
Chelsea Antiques Fair, Chelsea
Old Town Hall, King's Rd., SW3
5EE, **Sep 17-21**.

The Ephemera Society

01923 829079
www.ephemera-society.org.uk
London Bazaar, Doubletree by
Hilton, 92 Southampton Row,
WC1B 4BH, **Sep 7**.

Tribal Art London

020 8373 0454
www.tribalartlondon.com
The Mall Galleries, The Mall,
London SW1, **Sep 11-13**.

SOUTH EAST AND EAST

ANGLIA: inc. Bedfordshire,
Cambridgeshire, Essex,
Hertfordshire, Kent, Norfolk,
Suffolk, Surrey, Sussex.

Arun Fairs

01903 734112
www.arunfairs.com
Antiques Fair, Woodland Centre,
Rustington, Sussex, **Sep 7**.

B2B Events

01636 676531
www.b2bevents.info

Charmaine's Country Collection

01787 280267
Antiques and Collectors' Fair,
Risby Village Hall, Nr. Bury St.
Edmunds, Suffolk, IP28 6RT,
Sep 28.

IACF

01636 702326
www.iacf.co.uk
Ardingly International Antiques
Fair, South of England
Showground, Ardingly, Nr.
Haywards Heath, West Sussex,
RH17 6TL, **Sep 2-3**.

Lomax Antiques Fairs

01379 586134
www.lomaxfairs.com
Hitchingbrooke House Antiques
Fair, Huntingdon,
Cambridgeshire, PE29 3BN,
Sep 27-28.

Specialist Glass Fairs Ltd.

07787 762872
www.specialistglassfairs.com
Cambridge Glass Fair, Linton
Village College, Cambridge
Road, Linton,
Cams., CB21 4JB, **Sep 28**.

Wonder Whistle Enterprises

020 7249 4050
www.wonderwhistle.co.uk
The Sandown Park Antique &
Vintage Fair, Sandown Park
Racecourse, Esher, Surrey, KT10
9AJ, **Sep 16**.

SOUTH WEST: inc. Berkshire,
Buckinghamshire, Cornwall,
Devon, Dorset, Gloucestershire,
Hampshire, Isle of Wight,
Oxfordshire, Somerset,
Wiltshire.

THE
ANTIQUES
DEALERS
FAIR
LIMITED

*Come and buy the finest
antiques and works of art at
our events of distinction*

12 - 14 SEPTEMBER 2014

THE ANTIQUES & FINE ART FAIR
AT HAREWOOD
THE MARQUEE
HAREWOOD HOUSE
NEAR LEEDS LS17 9LQ

10 - 12 OCTOBER 2014

THE ESHER HALL
ANTIQUES & FINE ART FAIR
ESHER HALL
SANDOWN PARK RACECOURSE
ESHER, SURREY KT10 9AJ

OPENING TIMES

Friday 11.00 - 6.00
Saturday 10.30 - 6.00
Sunday 10.30 - 5.00

01797 252030
www.adfl.co.uk

Season

**PENMAN
ANTIQUES
FAIRS**

Ticket

Admits Two
to

*The
Chelsea
Antiques
Fair*

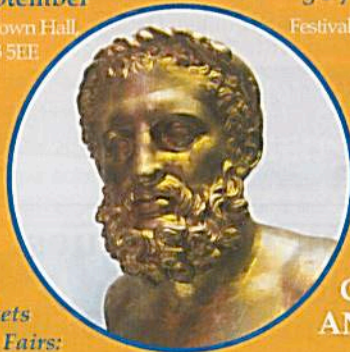
**PETERSFIELD
ANTIQUES
FAIR**

18 - 21 September

Chelsea Old Town Hall,
Kings Rd SW3 5EE
Thurs 11-8
Fri 11-7
Sat 11-6
Sun 11-5

5 - 7 September

Festival Hall, Heath Rd,
Petersfield
GU31 4EA
Fri 10.30-5.30
Sat 10.30-5.30
Sun 10.30-5



2015

Season Tickets
for Penman Fairs:

Please register your
email address on the
home page of

www.penman-fairs.co.uk

or send a s.a.e to Penmans,
5 Marlborough Gardens,
Malvern WR14 1EH

**CHESTER
ANTIQUES
SHOW**

16 - 19 October

County Grandstand
Chester Racecourse
Chester CH1 2LY
Thurs - Sat 10.30-5.30
Sunday 10.30-5

ANTIQUES INFO