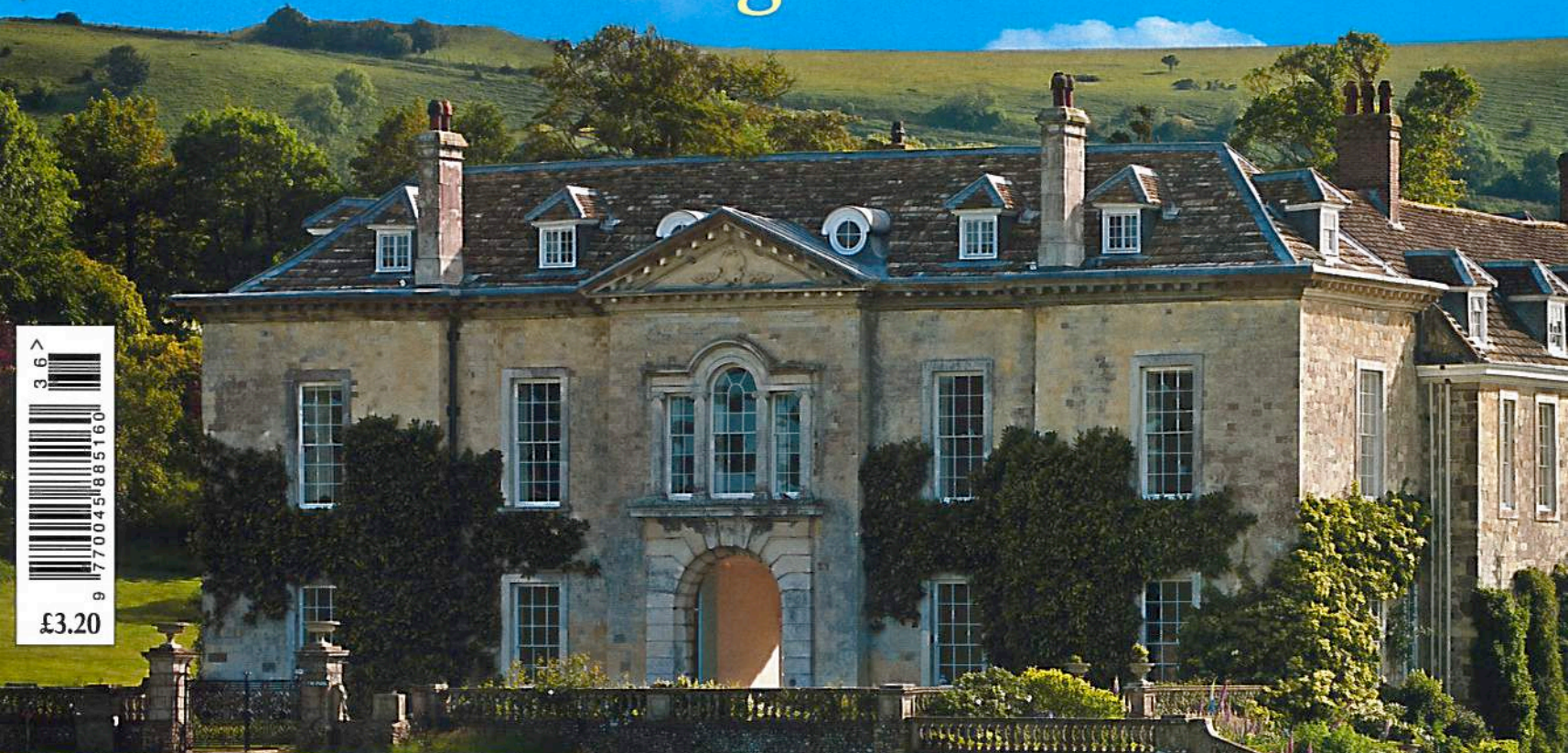


COUNTRY LIFE®

SEPTEMBER 3, 2014

EVERY WEEK

Turner: the master of light His later and greatest works



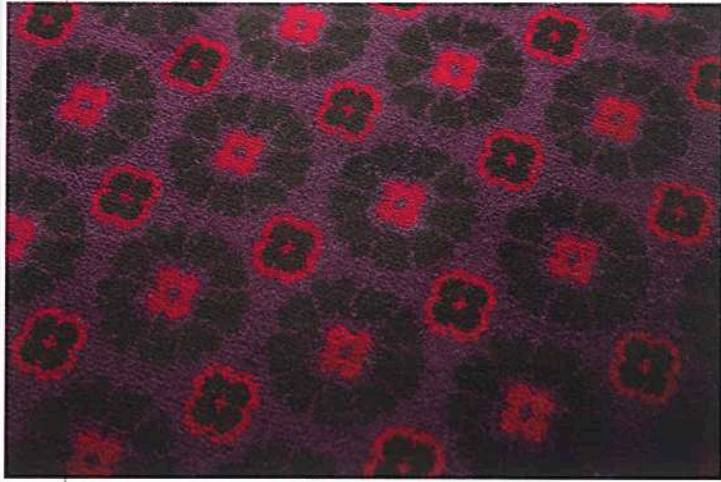
Firle: the jewel of the South Downs



How to join a racing syndicate and the best equestrian property
PLUS: Lucinda Green and eventing's stellar houses

3 6 >
9 770045 885160
£3.20

Interior design Inside stories



1



2

What they're saying
6 The new colour is green in every hue, following catwalk fashion. A lot of warm grey/browns are still around, but shot with colour. Now, contrasting and clashing textures and fibres create the interest rather than print

Bernie de le Cuona



3

1 Take to the floor

The versatile designer Ashley Hicks has collaborated with Alternative Flooring to create an inspiring collection of simple, graphic designs that would look at home in a town house or an old rectory. Also new are very different but similarly beautiful designs from Margo Selby (01264 335111; www.alternativeflooring.com)

2 London calling

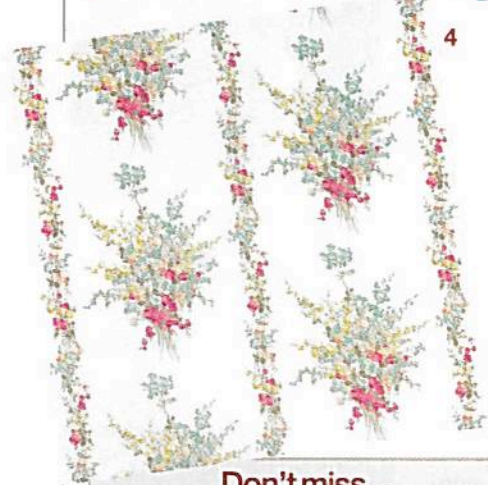
Anyone visiting the Design Centre Chelsea Harbour, London SW10, later this month should take a trip to the 3rd floor, home to designer Christopher Guy's huge UK outpost. It offers a fascinating insight into his distinctive furniture and accessories and can be found in the South Dome (020-3397 2410; www.christopherguy.com)

3 A stitch in time

Rising British tastemaker Ben Pentreath has collaborated with Fine Cell Work (www.finecellwork.com), the charity that promotes needlework in prisons, to create these striking cushions. £95 from Pentreath & Hall, 17, Rugby Street, London WC1, where there'll be an event on September 16 from 6pm to 8.30pm to celebrate their launch (020-7430 2526; www.pentreath-hall.com)

4 Summer bedrooms

Nina Campbell launched her pretty new fabric and wallpaper pattern, *Suzhou*, on Monday



4

Don't miss...

The Decorative Antiques & Textile Fair in Battersea takes place from September 30 to October 5 (www.decorativefair.com)

LAPADA Art & Antiques Fair (September 24-28) takes place in Berkeley Square, W1 (www.lapadalondon.com)

Original fashion illustrations for Christian Dior and others in a Gray M. C. A. selling exhibition (September 12-16) at Gallery 8, 8, Duke Street, London SW1 (01935 881696; www.graymca.co.uk)

Quentin Blake's work is the subject of a fascinating exhibition at House Of Illustration, 2, Granary Square, London N1, until November 2 (020-3696 2020; www.houseofillustration.org.uk)

5



(September 1), which features bright bunches of a summer favourite, sweet peas. Available in four colourways through Osborne & Little at £65/m (www.osborneandlittle.com; 020-8812 3123)

5 The write stuff

Anyone who has ever tried to find children's wallpaper that appeals to offspring and parents alike will be delighted with a design launched this month by Sanderson that's based on crayons. *Scribbler* is one of a large crop of delightful new patterns that will leave you spoilt for choice. From £34 for a 10m roll (0844 543 9500; www.sanderson-uk.com)

6 Be inspired

Stuck for design inspiration? Kit Kemp, Britain's most creative designer-cum-hotelier, has just opened the doors of her new hotel, Ham Yard, tucked away behind Piccadilly Circus, which offers hundreds of decorating ideas under one roof, using amazing combinations of colour and pattern that are a refreshing change from the polite beige schemes that dominate most London hotels. It's at One Ham Yard, London W1 (020-3642 2000; www.firmdalehotels.com)

6

